

421 ASTORIA CRESCENT SE

CALGARY, AB

1164 SQFT | 3 BEDS | 2.5 BATH

1838 TOTAL SQFT OF FULLY DEVELOPED SPACE

DOUBLE DETACHED HEATED GARAGE WITH LANE ACCESS!

HELLO,
Gorgeous!

TARAMOLINA.COM/421







Main Level Exterior Area 592.21 sq ft
Interior Area 554.21 sq ft



0 2 4 ft

PREPARED: 2022/12/08



Upper Level Exterior Area 571.57 sq ft
Interior Area 518.75 sq ft

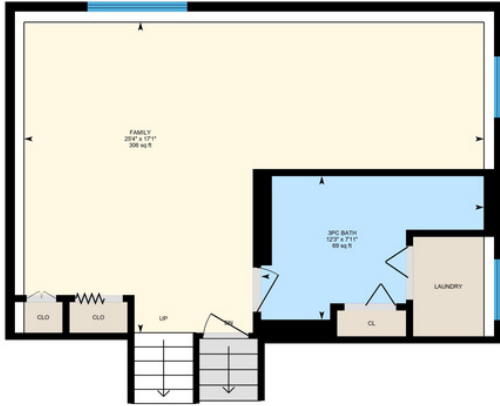


0 2 4 ft

PREPARED: 2022/12/08



Lower Level (Below Grade) Exterior Area 455.76 sq ft
Interior Area 453.30 sq ft
Excluded Area 64.82 sq ft



0 2 4 ft

PREPARED: 2022/12/08



Basement (Below Grade) Exterior Area 570.82 sq ft
Interior Area 521.26 sq ft



0 2 4 ft

PREPARED: 2022/12/08



Let's make your next move a Positive one!

TARA MOLINA REALTOR®

(403) 809-4639

TARA@TARAMOLINA.COM

TARAMOLINA.COM



Benchmark

TARA MOLINA
— REAL ESTATE GROUP —